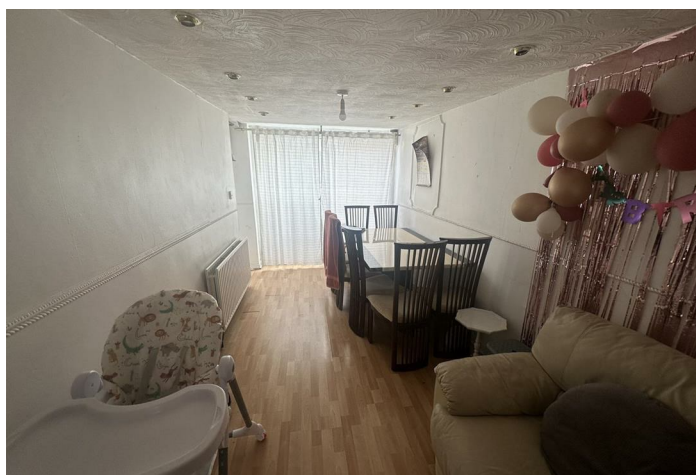




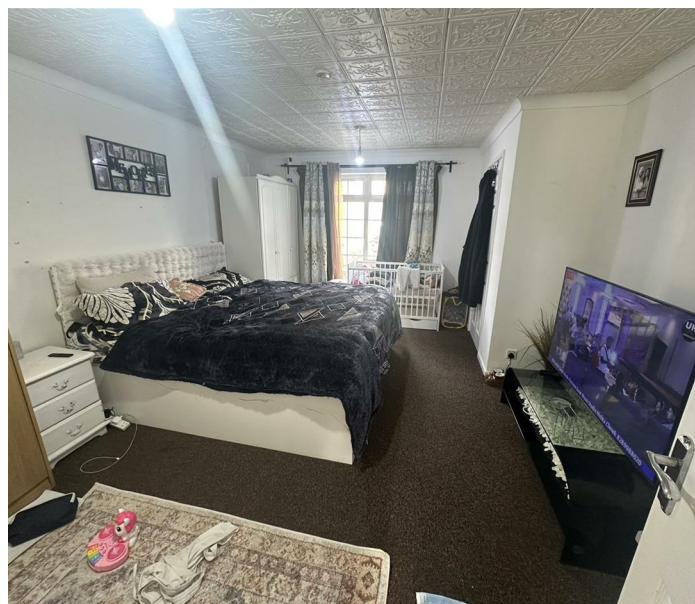
Ebenezer Street

West Bromwich

- Asking Price £245,000
- Two spacious reception rooms
- Off-road parking
- Three well-sized bedrooms
- Separate dining room and fitted kitchen
- Ground-floor WC



Local Authority **Sandwell**
Council Tax Band **C**
EPC Rating **D**



This beautifully proportioned three-bedroom home on Ebenezer Street offers flexible family living across two floors. With two reception rooms, a dedicated dining area, and excellent outdoor space, it's ideal for families, first-time buyers, or investors seeking a well-located property in the heart of West Bromwich.

Asking Price £245,000

Ground Floor

- Front Lounge: 4.8m x 3.7m (15'9" x 12'1")

A bright and welcoming reception room, perfect for relaxing or entertaining.

- Rear Lounge: 3.2m x 4.7m (10'6" x 15'5")

A versatile second reception space suitable for a family room, dining area, or study.

- Dining Room: 2.43m x 4.9m (8'0" x 16'1")

Ideal for family meals or hosting guests, with easy access to the kitchen.

- Kitchen: 2.41m x 4.0m (7'11" x 13'1")

Well-sized and functional kitchen with ample storage and workspace.

- Outhouse / WC: 1.3m x 1.3m (4'3" x 4'3")

Convenient ground-floor toilet and storage area.

- Shed: 3.0m x 6.6m (9'10" x 21'8")

Substantial outbuilding offering superb storage or potential workshop space.

First Floor

- Bedroom 1 (Front): 2.6m x 4.0m (8'6" x 13'1")

Spacious double bedroom with front aspect.

- Bedroom 2 (Front): 3.0m x 1.9m (9'10" x 6'3")

Perfect for a child's bedroom, nursery, or office.

- Bedroom 3 (Rear): 3.4m x 2.6m (11'2" x 8'6")

Comfortable double bedroom overlooking the rear garden.

- Bathroom (L-shaped): 1.9m x 2.2m (6'3" x 7'3")

Family bathroom with potential for modernisation or reconfiguration.

- Separate WC: 0.9m x 1.4m (3'0" x 4'7")

Additional convenience for busy households.

Pam Estates Ltd Office

187 Rookery Road, Handsworth,
Birmingham, West Midlands, B21 9QZ

Contact

01215549990
info@pamestates.co.uk
<https://www.pamestates.co.uk/>

Agents Note: Whilst every care has been taken to prepare these particulars, they are for guidance purposes only. All measurements are approximate and for general guidance purposes only and whilst every care has been taken to ensure accuracy, they should not be relied upon and potential buyers/tenants are advised to recheck the measurements.